



CAPWORTH

COMMERCIAL REALTY BROKERAGE CORPORATION
COURTIER EN IMMOBILIER COMMERCIAL

OFFICE PREMISES

FOR LEASE

200 Catherine Street Ottawa

Highlights:

- Ground-Floor, Unit 100 :
Approx. 5,828 RSF
- Second Floor:
~~Approx. 6,612 RSF~~
Approx. 2,600 RSF left to be leased
- Fourth Floor, Unit 401:
~~Approx. 2,700 RSF~~
- Asking Net Rent: \$15.00/RSF
With Inducement Package
- Additional Rent: \$16.53/RSF (2022)
- Plenty of Parking
- Adjacent & Easy Access to
Highway 417
- Fully Upgraded HVAC Systems
- Easy Access to Downtown Core
- Corporate Boardroom Available
On a daily basis
- Popular Amenities nearby

LEASED

For all inquiries please contact :
(Brokers Protected)

Arthur Tallis, Broker
1 (613) 979-1855
atallis@capworthrealty.com

Denis Shank, Broker of Record
1 (613) 601-1353
dshank@capworthrealty.com

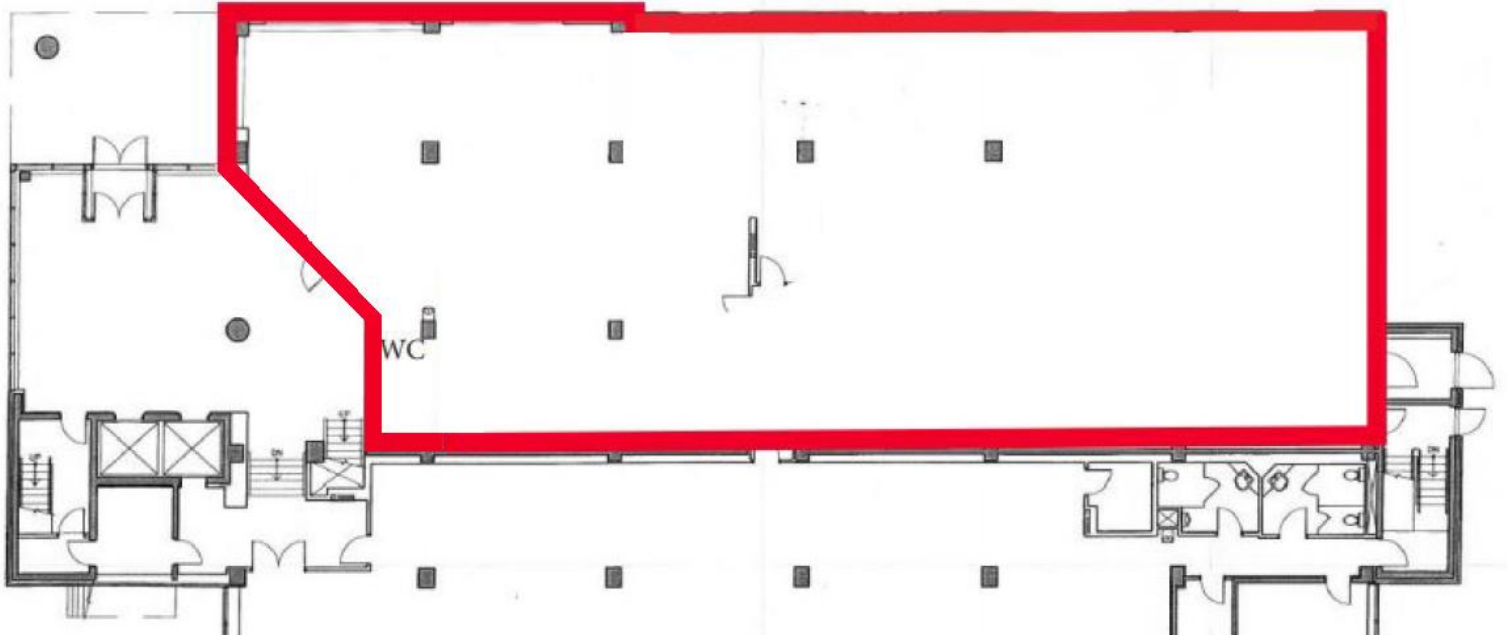


COMMON AREAS



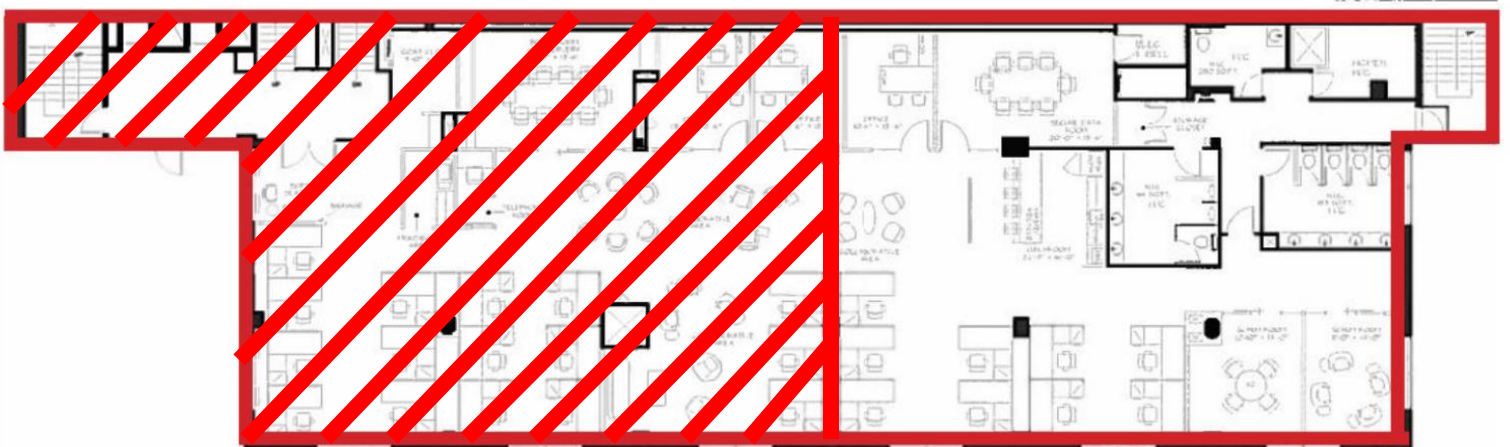
1st Floor

Approx. 5,828 SF



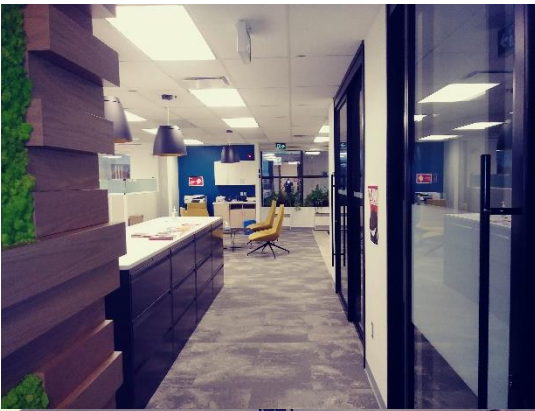
2nd Floor

Approx. 2,600 SF



4th Floor

Approx. 2,769 SF



For all inquiries please contact **Arthur Tallis, Broker** | 1 (613) 979-1855 | atallis@capworthrealty.com
Denis Shank, Broker of Record | 1 (613) 601-1353 | dshank@capworthrealty.com

This document has been prepared by Capworth Commercial Realty Brokerage Corporation for the purpose of advertising and general information only. In regards to the information found within this document, Capworth Commercial Realty Brokerage Corporation makes no guarantees, representations or warranties of any kind, expressed or implied, regarding its accuracy and reliability. Any interested party should conduct a careful, independent investigation of the property to determine the suitability of the property for their specific needs.